

簡介

Mei LEE 李梅華 台灣出生，自1995定居比利時。畢業於實踐應用美術系 空間組，後進修於比利時La Cambre 工業設計系及布魯塞爾Art & Métier、安特衛普Saint Luca 珠寶設計系。早期任職於大元聯合建築設計事務所，1993 前往義大利歐洲學習進修。2000 於布魯塞爾成立 *o gallery* 當代珠寶藝廊，並接受委託案成為獨立策展人。對建築、表演與各類工藝充滿熱情，對材質、人體與空間關係不斷研究。近十年他也跟隨大師修習磁器、漆器與手工玻璃...等不同傳統工藝。遊藝於空間、家具、工業設計及珠寶創作等不同領域。除了獨立作業於室內設計、珠寶設計、工藝創作，同時也是國際知名表演團體Lucpetitcreation 特聘的藝術顧問、杭州甲鼎室內設計有限公司 設計顧問。

Mei LEE 李梅華 was born and raised in Taiwan, now based in Belgium since 1995. After graduating with a degree in Applied Arts with a focus in Space, she went on to study industrial design at La Cambre in Belgium, and jewelry design at Art & Métier in Brussels and Saint Luca in Antwerp. She worked for ARCTECH at the early stage of her career, until she went to Italy for post-graduate study in 1993. In 2000, Lee created *o gallery*, a contemporary jewelry gallery in Brussels, and started to work as an independent curator on commission. With an affinity for architecture, performing arts and handicrafts of all sorts, Lee is committed to explore the dynamics between materials, person and space. For the past 10 years, she has been learning various traditional crafts such as glasswork, porcelain and lacquerware, under the tutelage of master-crafters. Well-versed in many fields, Lee's work covers a wide artistic range from space and industrial designs to carpentry and jewelry. Lee is known as an independent interior designer, jewelry designer, and creative craft designer, as well as special art consultant for international performance arts collective Luc Petit Création, and design consultant for Jiading Interior Design based in Hangzhou, China.

工作往來於歐洲跟亞洲之間。

Lee works between Europe and Asia.

跨界創作的介質與尺度或許有所差異，但是其根源都是以人本為出發。也許是這，樣跨界跨文化與跨國界的工作與生活經驗，獨立與融合、矛盾與和諧、聚焦與留白一直是他設計中重要的思考元素，尊重材料、尊重環境和細節的構思都是他在設計中的熱情所在。

In Lee's opinion, it might sound irrational to integrate different media and scales across borders and disciplines, but the design is still based on the human experience at its core. Perhaps in this case, Lee's intercultural and international work-life experience has inspired her designs that explore the duality between independence and integration, contradiction and harmony, the highlights and the blank space. Her experience also taught her to be respectful of the environment and the materials, and be thoughtful of each detail, which translates into her passion for design.

Mei Lee 的作品見於歐美台灣私人 和美術館收藏並多次在世界競賽中入選獲獎。

Mei Lee's works can be seen in private collections, galleries and art museums in Europe, the U.S. and Taiwan, and have earned her multiple awards in international competitions.

Silver-Triennial Hanau Goldsmith Hall (Germany), Antwerp international competition of Diamond (Belgium). First public prix of "Silver as Water" international competition". Schoonhoven Silver Art Foundation, Netherlands



Interior design 茶空間 / tea space



Simplicity comfort

客廳 Living room



生活的氣息與溫度 / 自然開闊 /

1樓客廳與餐廳區 保持開闊留白、色彩簡約，讓房屋四周的光線和綠意隨著春夏秋冬、日出日落 錯落在空間的每個角落，夜晚 組合式的 光源配置也可以營造出不同的 氛圍。牆面採用大量可以調節濕度的再生材質樂土摻抹出手作質感，以淺色調的白橡木、桉木實木訂製家具延續自然。

演奏廳 / 視聽室 / 閱讀室



銅 / 柚木 / 綠意 / 寧靜 卻富有生命力

2樓把整層最完整與美麗的空間留作演奏視聽室，這裡也是一個小型的圖書館閱讀區。面對著窗外的綠意躺在舒服的椅子上聽音樂看書聊天，空間與青翠的環境融為一體，同時也享受著自然通風的舒適感受。







主臥

3樓是主人夫妻樓層，簡約柔和、放鬆而私密。
低照明度的休憩空間予人包覆性的安全感，但打開窗簾卻又能夠將戶外寬闊的綠意一覽而入。



主臥書房



見心明性 / 平衡智慧藍

男女主人可以同時使用的書房辦公區。這個區域的延續摺疊門可以全然開放也可以關上形成完全獨立的空間。

超大型的雙面書桌 更像是空間裡的雕塑，耐候剛桌腳同時兼具 大型花器功能，再次重疊室內與戶外的綠意。



轉角遇見美

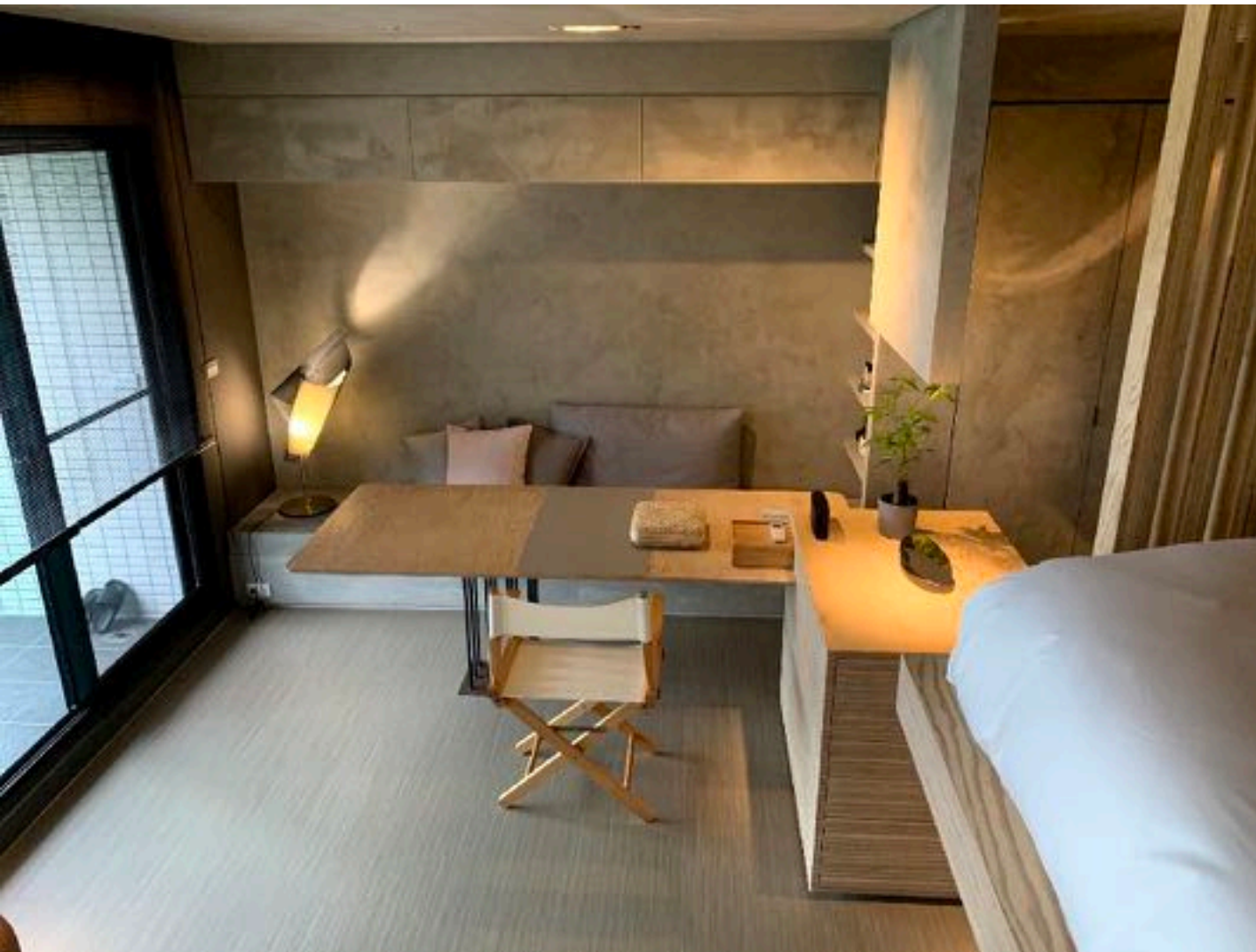


Studio

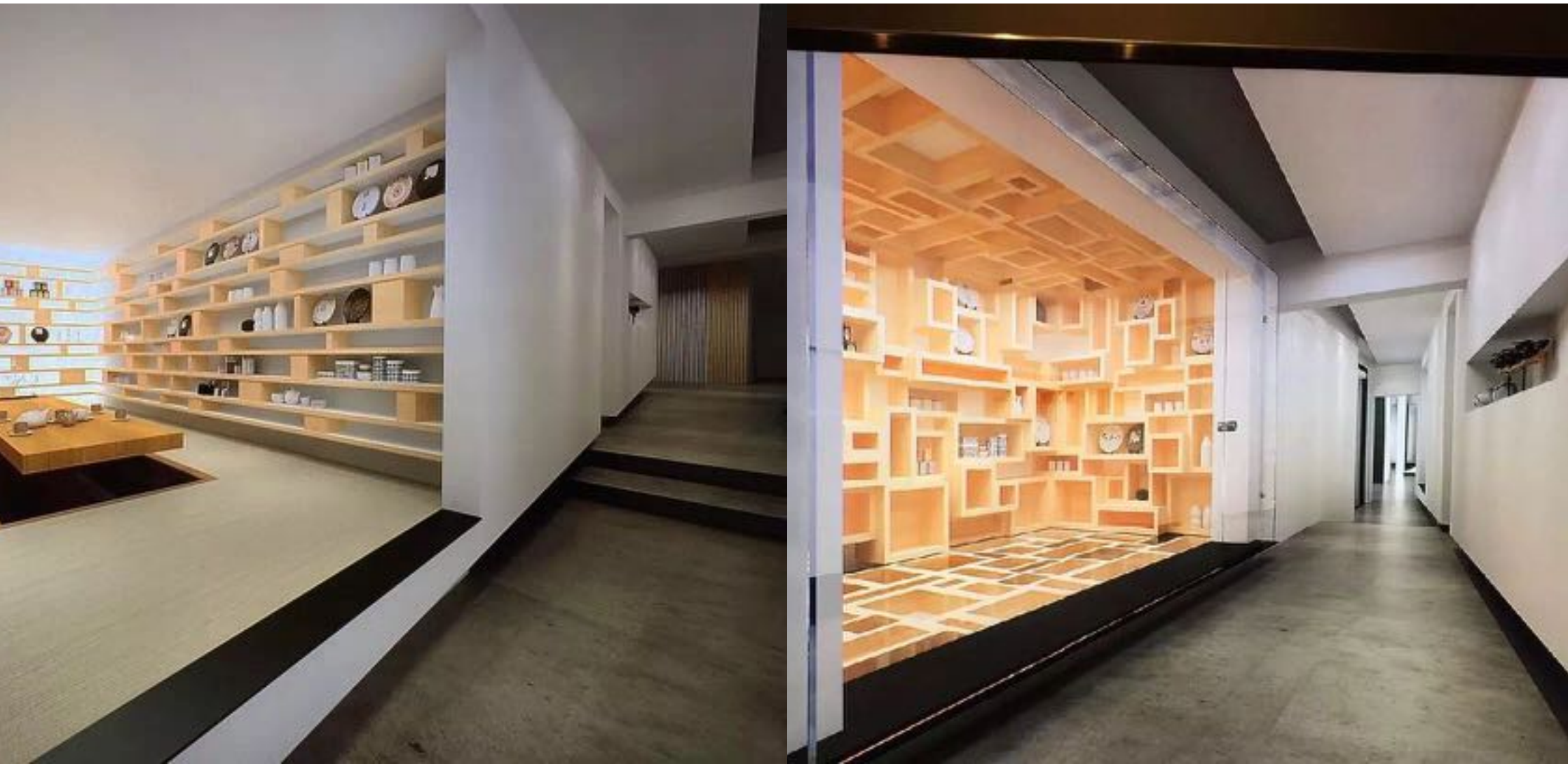
















Gallery

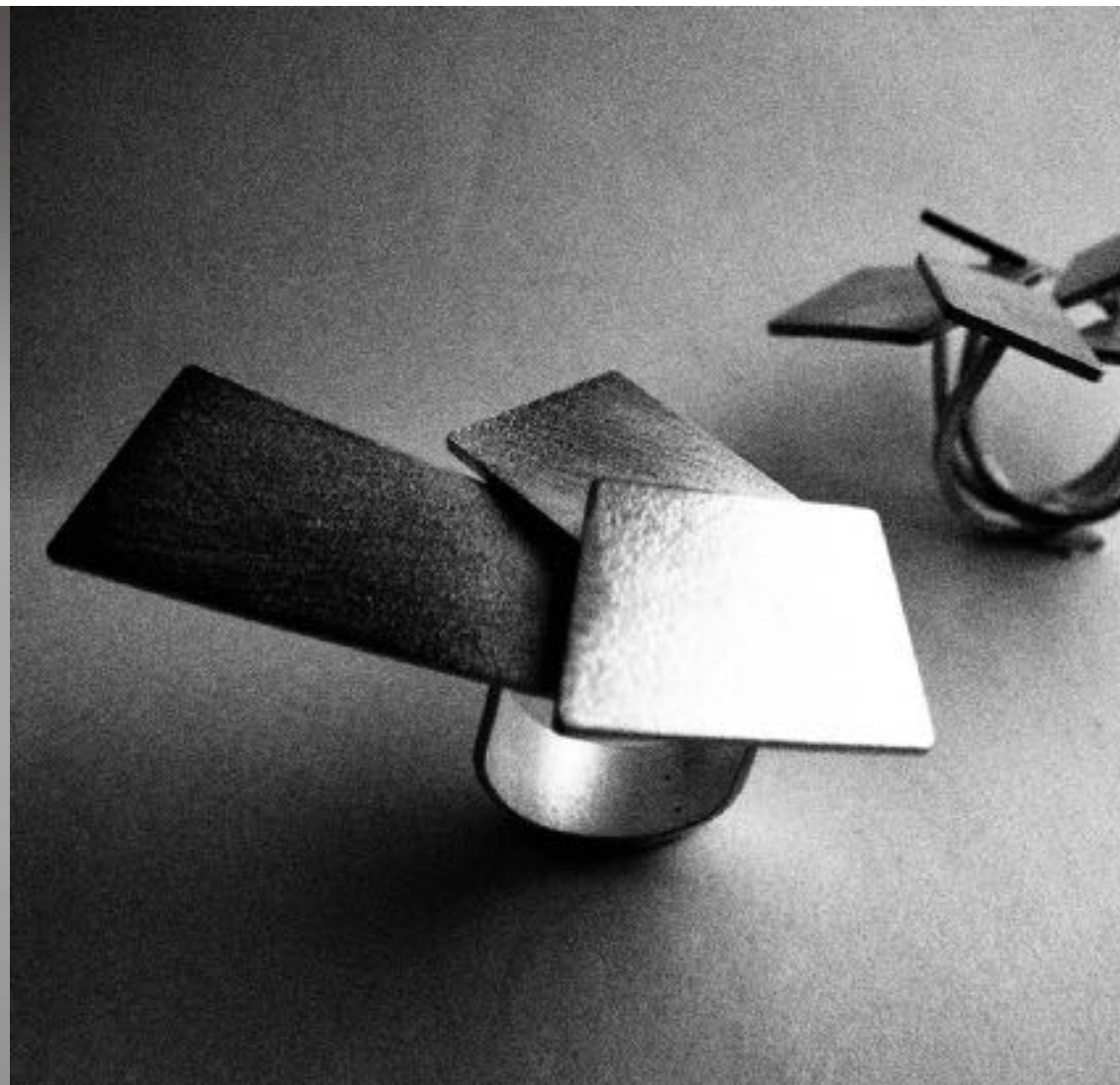


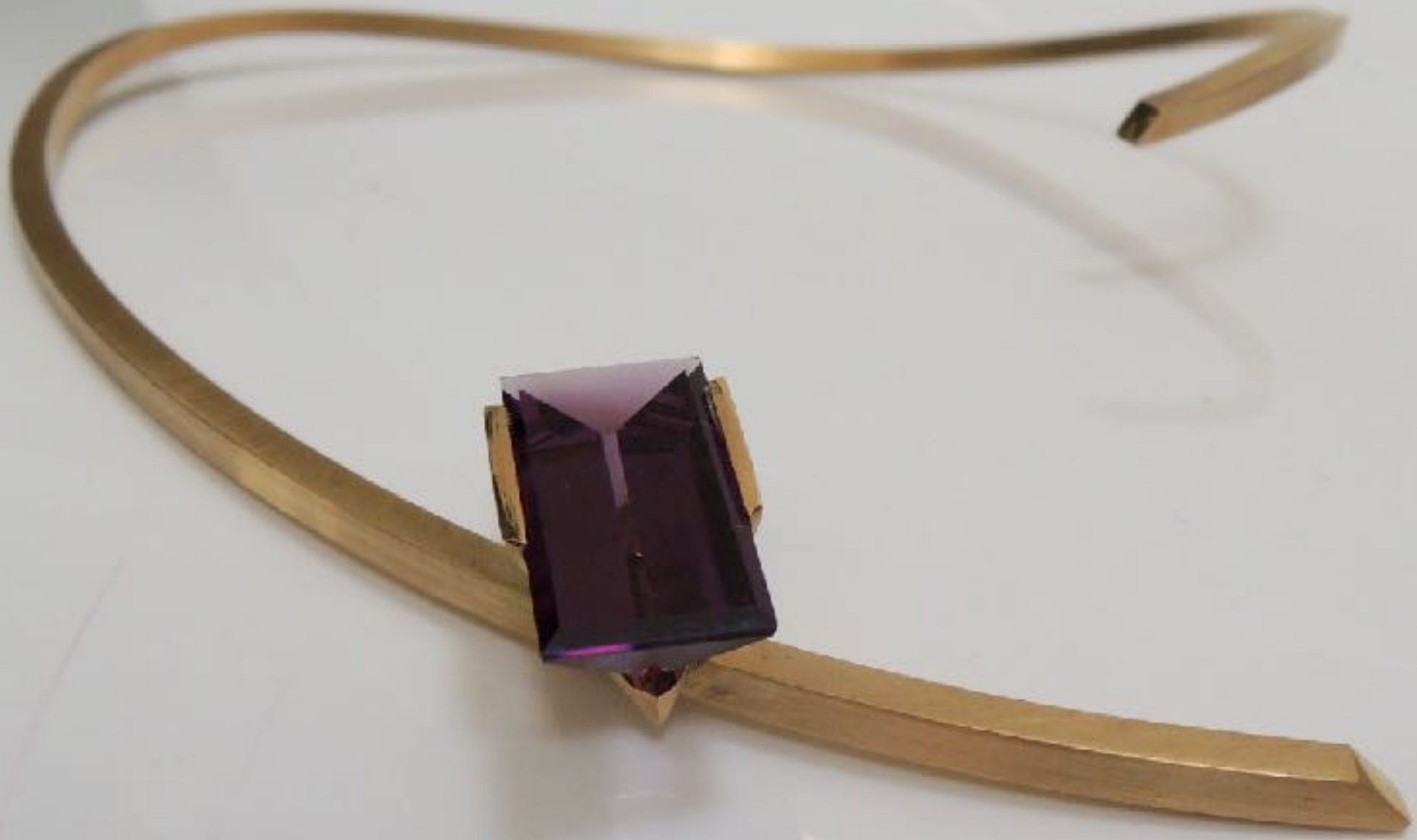




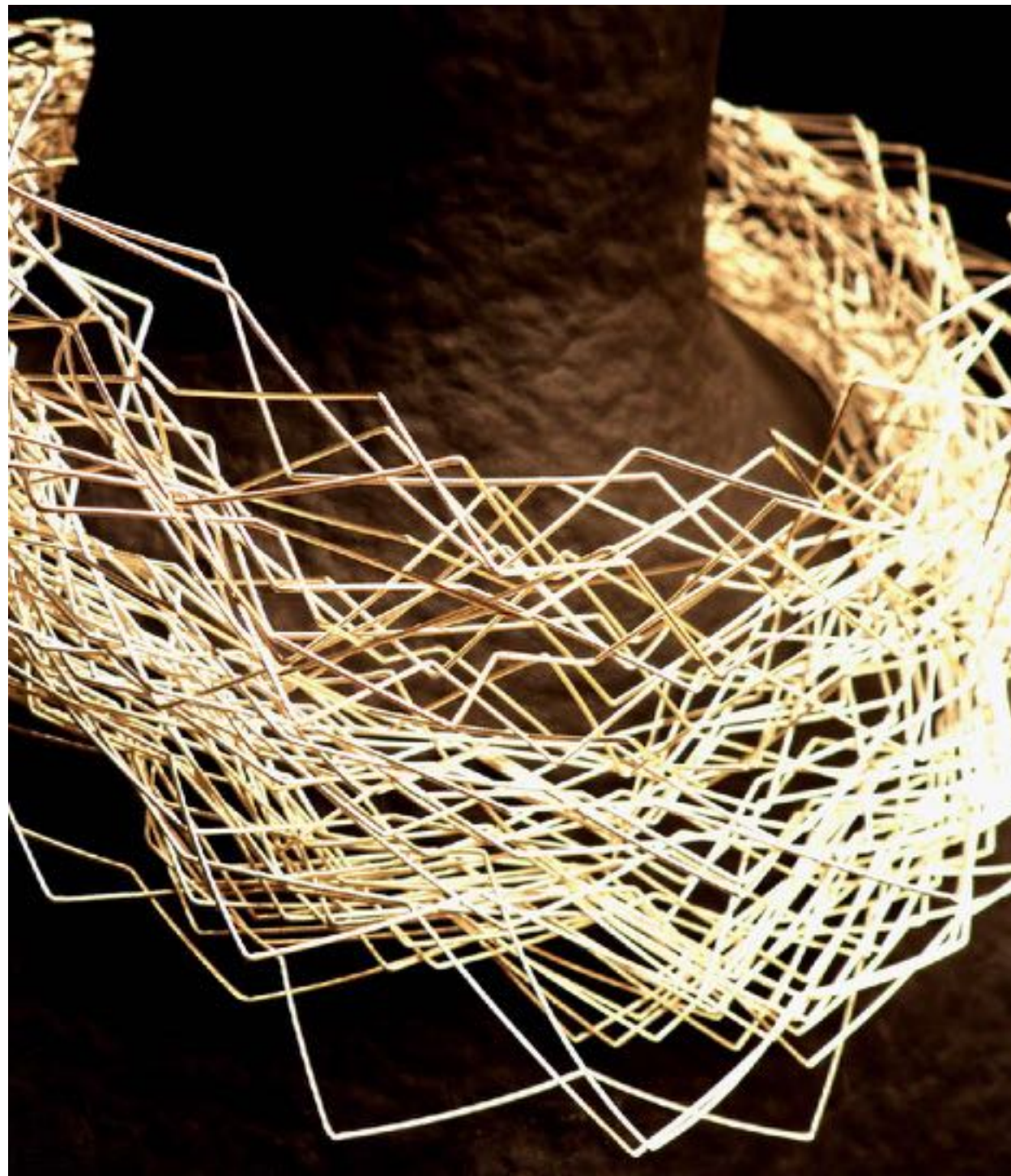


Jewellery works











Scholarship

1986-1991 : **Design and Applied Arts. Interior design** , Shih Chien university. Taipei - Taiwan

1996 -1999: **Industrial Design** , Ecole Nationale Supérieure des Arts Visuels de La Cambre. Brussels, Belgium 1996-1999 : **Jewellery and Engraving Techniques** , Institut de la Parure, de l'Habillement et de la Bijouterie. Brussels, Belgium

1999-2001 : **Jewellery Design** , external student. Karel de Grote Hogeschool - Sint-Lucas. Antwerp, Belgium

Professional

1988-1989 : Various training periods as **interior designer** in Taiwanese companies

1990-1994 : ARTECH Inc. (Taipei, Taiwan) : **Interior designer** furniture , exhibition rooms, offices ,

1998 : Birth of "Mei Lee" studio. Brussels, Belgium. Projects for interior & jewellery

2002 : "O" Gallery, specialized in contemporary jewellery, silver object and furniture design. Brussels, Belgium. 2010 founded the design company accent art & design

2011-2015 : "iii" Gallery, specialized art craft & design. Grand sablon ,Brussels, Belgium

2018 :art consultant for international performance arts collective Luc Petit Création

2019 : design consultant for Jiading Interior Design based in Hangzhou, China.

Exhibitions (selection)

1999 September - Exhibition "EXIT", contemporary jewellery. Taipei, Taiwan

2000 November- 2001 January - Exhibition "4X4" contemporary jewellery and silversmithing, European Parliament, Brussels, De Mijlpaal Gallery, Heusden-Zolder, Belgium

2001 May "Internation jewellery kobe 2001" ,kobe , Japan; Mikimoto Ginza, Tokyo, Japan

2001 July -Belgie-Nederland juweelkunst 1945-2000 , Museum Sierkunst & Vormgeving , Gent ,

2001 August "The World Competition of Arts & Crafts KANAZAWA" , Japan

2001 August "13th Silbertriennale" , Hanau, Germany

2001 December "Out of Taiwan" ,Brussels, Belgium

2002 March "Silver as Water", Stichting Zilverkunst, Schoonhoven, Netherlands

2002 & 2007 May "European Triennial of Contemporary Jewellery 2002", Belgium

2002 Sep. " Het Belgisch Juweel" ,Cultuurcentrum Knokke-Heist

2004 "Mans jewellery"- Diamantmuseum Provincie Antwerpen , Belgium

2005 solo exhibition "gallery art & export" ,Oslo

2008 "show case " lineart faire gent , Belgium

2009 "living silver" Brussels Belgium

2011 solo exhibition " in & out " Milano

2015-2020 solo exhibition in Taipei / Tokyo/ Brussels / USA / Holland

Awards

2000 good design prix of "Jewelry and Gem: New Products Design in Jewelry Decoration", Taipei, Taiwan 2001 5th prix of "28th International Pearl Design Contest 2001", Tokyo, Japon

2001 2009 laureate for the 13th Silver-Triennial 2001 Deutsches Goldschmiedehaus Hanau, Germany

2001L laureate of "The World Competition of Arts & Crafts Kanazawa", Japon.

2001 laureate -The " Herfstselecties 2001" VIZO, Brussels , Belgium

2002 First public prix of "Silver as Water" international competition ".Schoonhoven Silver Art Foundation, Netherlands 2003 2007, 2011 laureate of "Antwerp Diamond High Council international Awards" Antwerp-Belgium